

Contact our HS2 Helpdesk team on **08081 434 434**

HS2 Update

Lichfield, Fradley, Streethay, Kings Bromley and Handsacre | February 2023

High Speed Two (HS2) is the new high speed railway for Britain. This update provides information about our works on Phase One of the railway in Lichfield, Staffordshire.

Progressing the A38 retained cutting

HS2 will pass under the A38, West Coast Main Line (WCML) and South Staffordshire rail line in a retained cutting below ground level.

We changed our design in response to community feedback to deliver a retained cutting that reduces the visual impact of the railway in Lichfield while using 80% less concrete. This will help us to decrease our carbon footprint. **Click here to learn more about our updated HS2 designs.**

A38 southbound slip-road

To progress with the retained cutting programme safely and efficiently, we closed the southbound slip road at Streethay in August 2022.

We are now building the retaining piled walls that will support the cutting under the A38. To enable these works we have excavated the A38

southbound slip road and completed three utility diversions.

A38 main carriageway and northbound slip-road

You may have noticed we are already working next to the A38 northbound carriageway as we complete utility diversions and build a temporary road diversion. We will switch traffic onto the temporary road this summer allowing us to keep the A38 open while we construct the railway.

We will additionally start piling works on the northbound slip-road to enable us to build this section of the retained cutting.

We will divert the footpath that currently runs alongside the northbound slip road to keep it open during construction.

We will share further HS2 updates in your area this summer.



Our working area adjacent to the A38 southbound carriageway

We are hosting drop-in events in Lichfield. Find out more **here** or scan the QR code.



Click **here** or scan the QR code to be kept informed of employment opportunities:



You can read about our upcoming works in Staffordshire **here** or scan the QR code:



Progressing the Cappers Lane Overbridge and Whittington Common cutting

For the next few months, we will be preparing to build the Cappers Lane Overbridge and Whittington Common Cutting. We will be constructing site accesses, haul roads and excavating soil between Cappers Lane and Darnford Lane.

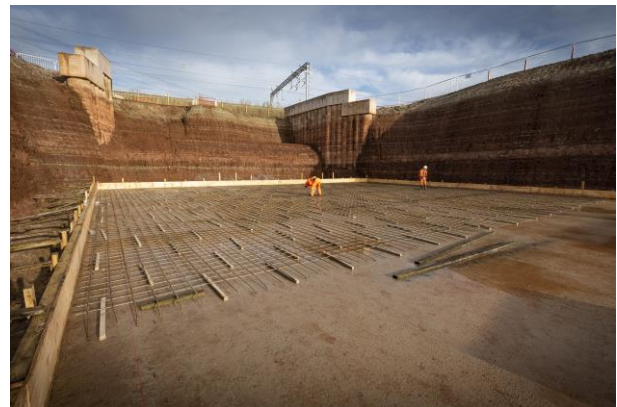
As part of our work in the area, we have been considering options to maintain vehicle access on Park Lane in Whittington. To do this, we are planning to build a temporary diversion road next to Park Lane during construction. We will need to introduce some short-term road closures on Park Lane while we connect the new section of road to the existing highway, but this will significantly reduce disruption in the long term. We will update more about the Park Lane diversion this spring.



Progressing the piling works to prepare for the A38 retained cutting

Preparing for the Fulfen Wood and South Staffordshire Line overbridges

The Fulfen Wood Overbridge will enable the new HS2 railway to pass under the West Coast Main Line (WCML). We have excavated a working area next to WCML to build the bridge that we will move into place during a nine-day railway closure this summer. During the closure, we will remove a section of the existing railway and embankment, install the bridge and then replace and re-open the railway.



Excavating next to the West Coast Mainline (WCML) as we prepare to build and install the Fulfen Wood Overbridge

We are also progressing with preparatory work to build the overbridge for the existing South Staffordshire Line, to enable the HS2 railway to pass underneath. We will construct the bridge deck next to the railway this spring and install it during a railway closure in the summer.

Fradley and Streethay 31 and 7 Public Rights of Way closure

We have closed **Public Rights of Way Fradley and Streethay 31 and 7**, from **13 February 2023** to **December 2024**, to ensure public safety while we complete our work. [Click here to find out more about the closure](#) or scan the QR code.



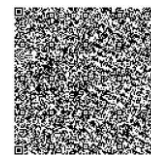
Building haul roads and compounds near Kings Bromley and Handsacre

We have set up compounds by Wood End Lane (Curborough Compound) and Shaw Lane (Shaw Lane Compound) where our workforce are busy creating haul roads, accesses, completing piling works and diverting utilities. During the spring, we will install safety barriers by our working area on the A515 to prepare to build the A515 underbridge. We are working closely with HS2 Phase 2a as they progress plans to widen Wood End Lane this summer.

Supporting local businesses in Lichfield and the wider area

While building HS2, we are visiting and supporting local shops and businesses in Lichfield and the wider area. In December 2022, we filmed a short a video that was shown on the local Birmingham TV channel and shared on their social media. Our video aims to encourage local people and our workforce to spend their money on local high street businesses to help them flourish in tough economic conditions.

Click here to view our video or by scanning the QR code.



HS2 funds for the community

We are offering two funds that are available to local communities and businesses between the West Midlands and London, to help with the disruption caused by our construction work. These are the **Community and Environment Fund (CEF)** and the **Business and Local Economy Fund (BLEF)**. **Click here to Find out more about the funds.**



Securing funding for the next stage of Lichfield Canal restoration

HS2 provided a £75,000 grant through CEF to Lichfield and Hatherton Canals Restoration Trust (LHCRT) to restore the Darnford Moors section of the Lichfield canal, transforming the area into a wildlife haven. This part of the Lichfield canal will link to the section we are constructing near Cappers Lane. Our donation will enable LHCRT to make habitat improvements to the Darnford Brook wetlands, existing woodland and hedgerows and make the canal an aquatic habitat. BBV has begun supporting LHCRT to develop their designs using in-house design experts.



Peter Buck (engineering) and Carole Mills (Chair) of LHCRT at Darnford Moors

Community investment

BBV's Community Investment programme enables us to support the communities most impacted by our works. BBV and our supply chain partners can give back through volunteering time, providing resources and capacity building through the transfer of knowledge and skills. Please contact us at **communityinvestment@balfourbeattyvinci.com** to request support.

Upcycling and donating construction materials and trees

We are committed to boosting sustainability by supporting local projects that have a community benefit. We are currently donating woodchips to local organisations and donating trees to help them make environmental improvements and improve their own sustainability credentials. We additionally donated salvaged bricks to a local business in Lichfield that paid £800 to St Giles Hospice, Whittington. The hospice provides critical nursing and medical care to patients in the Lichfield area.

Attending career awareness events in Lichfield

In October 2022, we hosted a career awareness event at Lichfield Jobcentre and attended the Lichfield District Job Fair. We spoke with over 90 job seekers and promoted the variety of job opportunities we have on the project.

Keeping you informed

We are committed to keeping you informed about work on HS2. This includes ensuring you know what to expect and when to expect it, as well as how we can help you.

The Residents' Commissioner

The independent Residents' Commissioner oversees and monitors our commitments to you.

The commissioner's reports and our responses can be found at www.gov.uk/government/collections/hs2-ltd-residents-commissioner

The Residents' Commissioner makes sure we fulfil the commitments in the HS2 Community Engagement Strategy (<https://bit.ly/3oOA25j>).

The Residents' Commissioner can be contacted on: residentscommissioner@hs2.org.uk

Construction Commissioner

The independent Construction Commissioner regularly meets our Chief Executive Officer to raise any concerns or emerging trends across HS2.

The Construction Commissioner's role has been developed to monitor the way we manage and respond to construction complaints.

The commissioner mediates on disputes about construction, involving individuals and organisations, that we can't resolve. The commissioner advises members of the public about how to make a complaint about construction.

The Construction Commissioner can be contacted on: complaints@hs2-cc.org.uk

Property and compensation

You can find out about HS2 and properties along the route by visiting:

www.gov.uk/government/collections/hs2-property

Find out if you can claim compensation at:

www.gov.uk/claim-compensation-if-affected-by-hs2

Holding us to account

If you are unhappy for any reason you can make a complaint by contacting the HS2 Helpdesk. For more details on our complaints process, please visit: www.hs2.org.uk/in-your-area/contact-us/how-to-complain/

Reference number: HS2-MW-BBV-Ph1-Ar-No-N1-CR-11-06/02/2023

High Speed Two (HS2) Limited, registered in England and Wales.
Registered office: Two Snowhill, Snow Hill Queensway, Birmingham B4 6GA.
Company registration number: 06791686. VAT registration number: 888 8512 56

Contact us

Contact our HS2 Helpdesk team all day, every day of the year on:

 Freephone **08081 434 434**

 Minicom **08081 456 472**

 Email **HS2enquiries@hs2.org.uk**

Write to:

FREEPOST

HS2 Community Engagement

Website **www.hs2.org.uk**

To keep up to date with what is happening in your local area, visit: **www.HS2inyourarea.co.uk**

Please contact us if you'd like a free copy of this document in large print, Braille, audio or 'easy read' format. You can also contact us for help and information in a different language.

HS2 Ltd is committed to protecting personal information. If you wish to know more about how we use your personal information please see our Privacy Notice: <https://www.gov.uk/government/publications/high-speed-two-ltd-privacy-notice>