



Notice of A38 slip road closures at Streethay, Staffordshire from August 2022

June 2022 | www.hs2.org.uk

High Speed Two (HS2) is the new high speed railway for Britain. Balfour Beatty VINCI (BBV) is working in partnership with HS2 Ltd to build the new high-speed railway in your area.

During the parliamentary stages we identified ways to reduce the visual impact of the scheme, we responded to concerns and the design was changed to a cutting. This means the HS2 line will now run under the A38, so that it is less visible in your line of sight. Subsequent to this, during the design process we removed over 1 kilometre of retaining walls, cutting carbon on the project (see page 5 for more details).

The work we will be doing

To progress the cutting, we are constructing a bridge to take the A38 over the HS2 line. The new HS2 railway line will run beneath the main carriageway, slip roads and existing railway lines. To carry out this programme safely, we will have phased traffic management which will commence with the **closure of the A38 southbound slip road at Streethay from Monday 1 August 2022 at 9pm for 15 months**. We recognise this will be impactful but by closing the slip road it allows us to complete the work quicker overall, saving 12 months on our programme.

We will be constructing the supporting foundations and structure for the bridge. We will also be starting excavations for the A38 southbound slip road and carriageway overbridges.

During later phases of work, we will be closing the northbound slip road along with lane closures on the carriageway within the Streethay area.

We will be starting work on Monday 11 July

To prepare for the 15 month slip road closure we will be carrying out the following overnight closures:

- **Southbound slip road** from Monday 11 July for five nights
- **Northbound slip road** from Monday 25 July overnight for six weeks, not including weekends.

If you have a question about HS2 or our works, please contact our HS2 Helpdesk team on 08081 434 434 or email hs2enquiries@hs2.org.uk

Duration of works

15 months from Monday 1 August

Overnight southbound slip road closures from Monday 11 July for five nights.

Northbound slip road overnight closures from Monday 25 July for six weeks.

What to expect

We have extended our working hours during the 15 month slip road closure to be from 8am until 10pm.

Some noise and vibration from the work we are completing, including piling.

Clearly signed diversion route, do not follow Sat Navs.

What we will do

Our work is subject to consent.

Please register at www.hs2.org.uk/staffordshire for updates.

Notice of A38 slip road closures at Streethay, Staffordshire from August 2022

Notification



www.hs2.org.uk

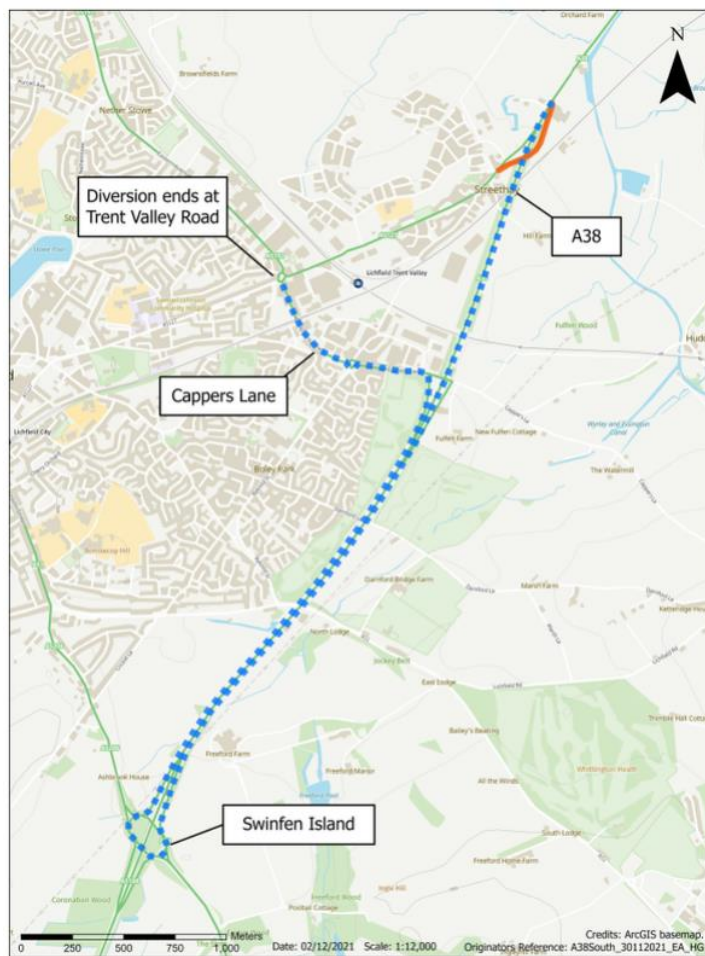
Map of southbound slip road closure at Streethay and diversion route

The map below details the southbound slip road closure and diversion route that will be in place from:

- Monday 11 July for five nights
- Monday 1 August for 15 months.

Our working hours during the overnight closures will commence at 9pm each evening and we will reopen, before rush hour, at 5:30am each morning. Whilst we have closures in place, clear diversions and signage will be displayed along the route for road users. There are narrow lanes and a speed limit of 40 mph in place, to ensure the safety of the public and our workforce.

This diversion will affect road users travelling into Streethay and parts of north Lichfield who would usually use the A38 southbound slip road to the A5127. The diversion will take road users to the next exit at Swinfen Island. Please do not use Sat Navs but instead follow the signed diversion. Our diversion route will be clearly signed and we will provide free vehicle recovery during our closures.



Contact our HS2 Helpdesk team on **08081 434 434**

Notice of A38 slip road closures at Streethay, Staffordshire from August 2022

Notification



www.hs2.org.uk

Map of overnight northbound slip road closure at Streethay and diversion route

The map below details the northbound slip road closure and diversion route that will be in place from Monday 25 July for six weeks, not including weekends.

Our working hours during the overnight closures will commence at 9pm each evening and we will reopen, before rush hour, at 5:30am each morning. Whilst we have closures in place, clear diversions and signage will be displayed along the route for road users. There are narrow lanes and a speed limit of 40 mph in place, to ensure the safety of the public and our workforce.

This diversion will affect road users travelling out of Streethay and parts of north Lichfield who would usually use the A38 northbound slip road. The diversion will direct road users along A5192 Eastern Avenue, A51 Stafford Road, A515 Tewnals Lane and along Wood End Lane, rejoining the A38 at Hilliard's Cross. Please do not use Sat Navs but instead follow the signed diversion. We will provide free vehicle recovery during our closures.



Contact our HS2 Helpdesk team on **08081 434 434**

Notice of A38 slip road closures at Streethay, Staffordshire from August 2022

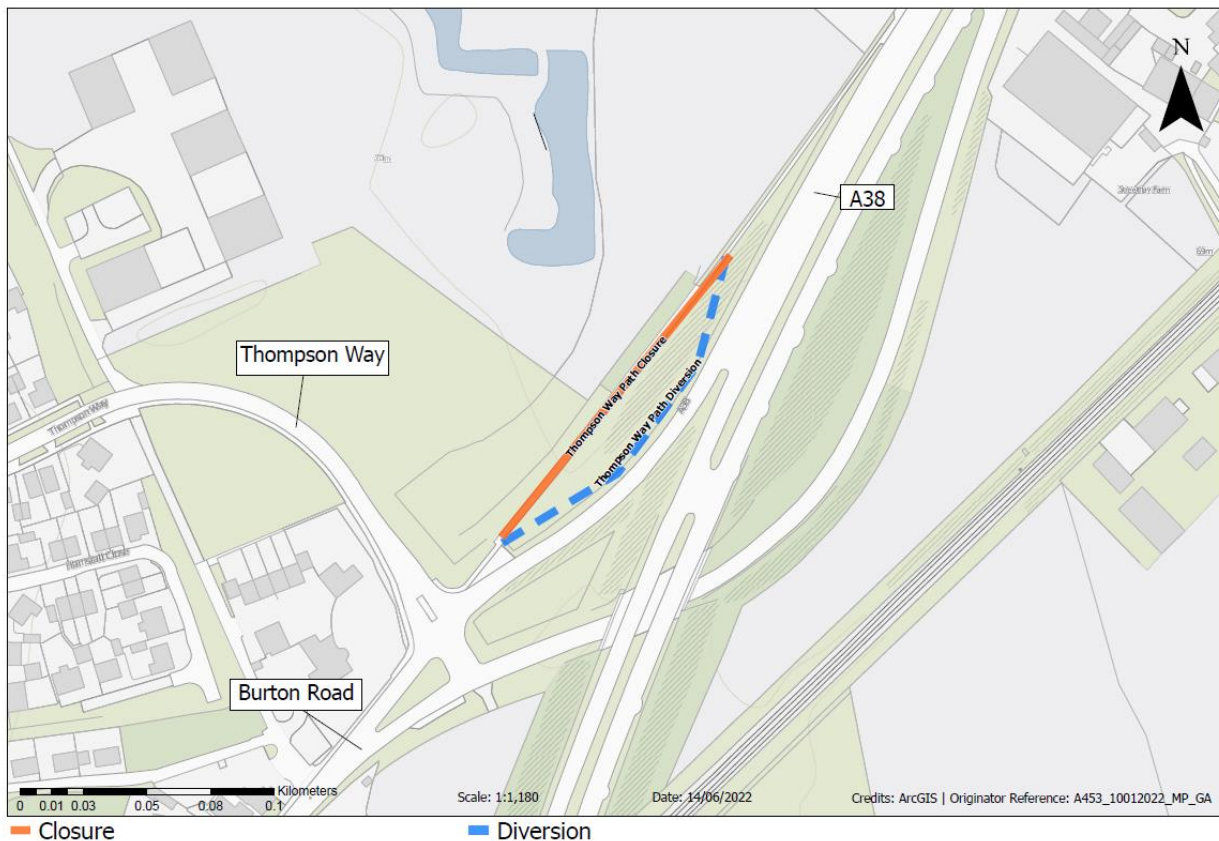
Notification



www.hs2.org.uk

Map of footpath diversion at Streethay

The map below details the A38 northbound slip road footpath diversion route that will be in place from Monday 11 July until the end of August 2022, including weekends.



Contact our HS2 Helpdesk team on **08081 434 434**

Notice of A38 southbound slip road closure at Streethay, Staffordshire from August 2022

Notification



www.hs2.org.uk

A38 Streethay Cutting in Lichfield, Staffordshire

As we progressed the design within this location, we identified ways to reduce the visual impact of the scheme. We responded to concerns and the design was changed to a cutting, which includes the construction of the A38 Rykneld Street overbridge and retained cutting.

The “retained cutting” will enable the HS2 line to pass under the A38, West Coast Main Line and South Staffordshire Rail Line, below ground level, therefore reducing its visibility from your line of sight. The original HS2 Environmental Statement (ES) scheme design included a large embankment and viaduct within the Streethay area. The viaduct was proposed to have been a minimum of 250m long and 20m above ground level. Due to the design changes, we will need to excavate and transport approximately 700,000m³ of earth from the cutting.

Improving safety and reducing impact on road users

The original HS2 ES scheme design required traffic management restrictions to be in place for six years, with the construction programme taking four years to complete. Our design changes have reduced our construction programme to three years and are expected to deliver significant benefits for the road user by removing the need for 12-months of narrow lane traffic management along the A38.

Minimising our environmental impact

The new design and traffic management phasing will provide substantial environmental and programme benefits by:

- Reducing the duration of the construction programme
- Maintaining the dual carriageway and therefore reducing periods of traffic congestion and CO²
- Reducing the amount of concrete required therefore cutting carbon on the project. Through the design development stages we have been able to remove approximately 80% of the concrete previously required for the retaining structure. This is the equivalent to 6,700 concrete mixer lorry loads.

Come and talk to us about our upcoming works at Streethay

Notification



www.hs2.org.uk

Find out more about our planned activities within Streethay

We are holding events in your area so you can learn more about HS2 works in Streethay. Details of our events are:

Community and stakeholder webinar, Tuesday 5 July at 5:30pm

Please use the below link to register your interest and for joining instructions. This webinar will be held online.

<https://www.eventbrite.co.uk/e/hs2-community-online-webinar-event-lichfield-tickets-370457296747>



Streethay drop-in event one, Monday 11 July at 2:30pm to 5:30pm

Venue: Boley Park Community Hall

Venue address: 7 Ryknild St, Lichfield WS14 9XU

Further details can be found here: <https://www.eventbrite.co.uk/e/hs2-bbv-community-drop-in-event-in-streethay-tickets-370476183237>

Streethay drop-in event two, Tuesday 19 July at 4pm to 6pm

Venue: Boley Park Community Hall

Venue address: 7 Ryknild St, Lichfield WS14 9XU

Further details can be found here: <https://www.eventbrite.co.uk/e/hs2-bbv-community-drop-in-event-in-streethay-tickets-370479683707>

Notice of A38 slip road closures at Streethay, Staffordshire from August 2022

Notification



www.hs2.org.uk

Artist impressions of the Streethay Cutting

These images shows the HS2 line going under the A38 at Streethay.



Contact our HS2 Helpdesk team on **08081 434 434**

Keeping you informed

We are committed to keeping you informed about work on HS2. This includes ensuring you know what to expect and when to expect it, as well as how we can help you.

The Residents' Commissioner

The independent Residents' Commissioner oversees and monitors our commitments to you.

The commissioner's reports and our responses can be found at www.gov.uk/government/collections/hs2-ltd-residents-commissioner

The Residents' Commissioner makes sure we fulfil the commitments in the HS2 Community Engagement Strategy (<https://bit.ly/3oOA25j>).

The Residents' Commissioner can be contacted on: residentscommissioner@hs2.org.uk

Construction Commissioner

The independent Construction Commissioner regularly meets our Chief Executive Officer to raise any concerns or emerging trends across HS2.

The Construction Commissioner's role has been developed to monitor the way we manage and respond to construction complaints.

The commissioner mediates on disputes about construction, involving individuals and organisations, that we can't resolve. The commissioner advises members of the public about how to make a complaint about construction.

The Construction Commissioner can be contacted on: complaints@hs2-cc.org.uk

Property and compensation

You can find out about HS2 and properties along the route by visiting:

www.gov.uk/government/collections/hs2-property

Find out if you can claim compensation at:

www.gov.uk/claim-compensation-if-affected-by-hs2

Holding us to account

If you are unhappy for any reason you can make a complaint by contacting the HS2 Helpdesk. For more details on our complaints process, please visit:

www.hs2.org.uk/in-your-area/contact-us/how-to-complain/

Reference number: HS2-MW-BBV-Ph1-Ar-No-N2-Traf-9-10/05/2022

High Speed Two (HS2) Limited, registered in England and Wales.

Registered office: Two Snowhill, Snow Hill Queensway, Birmingham B4 6GA.

Company registration number: 06791686. VAT registration number: 888 8512 56

Contact us

Contact our HS2 Helpdesk team all day, every day of the year on:

 Freephone **08081 434 434**

 Minicom **08081 456 472**

 Email **HS2enquiries@hs2.org.uk**

Write to:

FREEPOST

HS2 Community Engagement

Website **www.hs2.org.uk**

To keep up to date with what is happening in your local area, visit:
www.HS2inyourarea.co.uk

Please contact us if you'd like a free copy of this document in large print, Braille, audio or 'easy read' format. You can also contact us for help and information in a different language.

HS2 Ltd is committed to protecting personal information. If you wish to know more about how we use your personal information please see our Privacy Notice: <https://www.gov.uk/government/publications/high-speed-two-ltd-privacy-notice>