



# Update - Notice of ground investigation surveys

March 2021 | [www.hs2.org.uk](http://www.hs2.org.uk)

High Speed Two (HS2) is the new high speed railway for Britain. Balfour Beatty VINCI is working in partnership with HS2 Ltd to build the new high speed railway in your area.

## The work we will be doing

We will be undertaking ground investigation surveys on land off Rookery Lane, Hints. These surveys help us to understand more about the ground conditions where we want to build the railway. The surveys will involve taking soil samples and boring trial holes in different locations. We will use School Lane as an access to Rookery Lane, for a small number of 4x4 vehicles with trailers, to transport and set up equipment in the survey area (see map). The survey equipment will remain at this location for the period of our works.

## When these works will take place

We were not able to commence the survey works, as originally planned on 17 February 2021, due to weather and site access issues. We will commence surveys from 22 March 2021 for 3 weeks and return in late Spring / early summer to complete the remaining surveys at this location.

## Location of our working area

We are continually reviewing the works on our construction sites in line with Government and Public Health England (PHE) advice on dealing with COVID-19. The Government's current COVID-19 strategy makes clear that construction activity can continue as long as it complies with this guidance.

The health and safety of our workforce and the communities we affect is our key priority. Please be assured that those sites that are currently still working are doing so because they can operate within PHE and construction industry guidelines.

**If you have a question about HS2 or our works, please contact our HS2 Helpdesk team on 08081 434 434 or email [hs2enquiries@hs2.org.uk](mailto:hs2enquiries@hs2.org.uk)**

## Duration of works

These works will take place from 22 March for 3 weeks.

Our working hours will be 8.00am to 6.00pm.

Our workforce may be on site 1 hour before and after to set up and take down our work equipment.

## What to expect

A small number of 4x4 vehicles with trailers to transport equipment to and from the works area.

Some low level noise will be generated from the work we are completing.

## What we will do

Inform you in advance of any changes to the date shown.

Keep all sites safe and secure.

Ask you to register with [hs2instaffordshire.co.uk](http://hs2instaffordshire.co.uk) to receive updates.

# Notice of ground investigation surveys

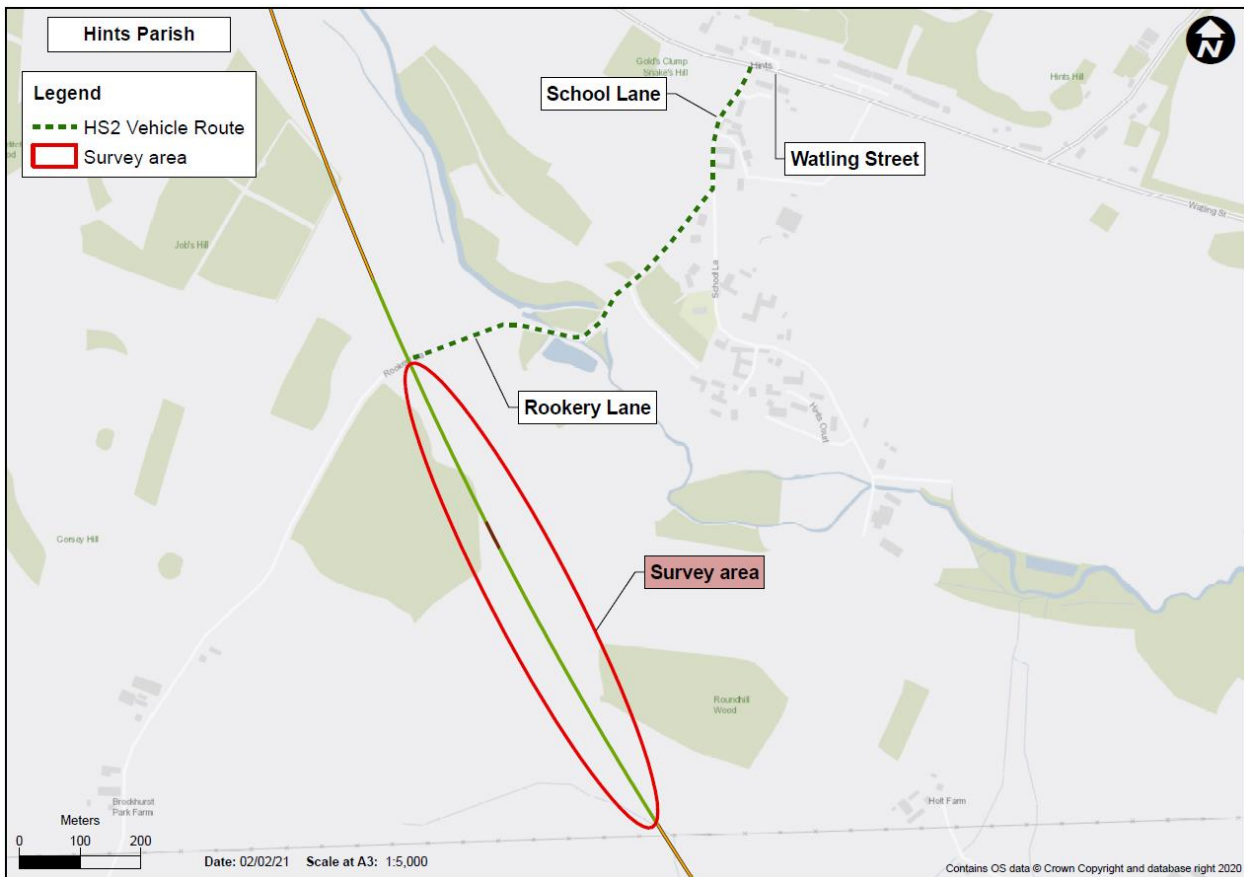
Notification



[www.hs2.org.uk](http://www.hs2.org.uk)

## Location of our working area

The map below shows where our working area will be.



Contact our HS2 Helpdesk team on **08081 434 434**

# What else is happening in your area?

[www.hs2.org.uk](http://www.hs2.org.uk)

## Contact our HS2 Helpdesk team

Our team is here to listen and respond to your enquiry, complaint or feedback to help us be a good neighbour.

You can contact our Helpdesk team all day, every day of the year on:

Freephone: **08081 434 434**

Minicom: **08081 456 472**

Email: [hs2enquiries@hs2.org.uk](mailto:hs2enquiries@hs2.org.uk)

## Keep up-to-date with your local community website

To find out more about what's happening in your area and receive regular email updates, you can sign up to our local community websites at: [www.hs2inyourarea.co.uk](http://www.hs2inyourarea.co.uk).

## About our Community and Business Funds

We are offering two funds that are available to local communities and businesses between the West Midlands and London, to help with the disruption caused by our construction work. These are the Community and Environment Fund (CEF) and the Business and Local Economy Fund (BLEF).

The CEF is designed to give communities the opportunity to share in the benefits of HS2. It is an allocated fund that communities are able to apply for, to help to support local projects that aim to improve their local area.

The BLEF is designed to support local economies that may be disrupted by the construction of HS2. BLEF grants are for local business support organisations and local authorities to help maintain business activity in local communities.

For more information about each of these funds, including how to apply, please visit: <https://www.groundwork.org.uk/hs2funds>



# Keeping you informed

We are committed to keeping you informed about work on HS2. This includes ensuring you know what to expect and when to expect it, as well as how we can help.

## Residents' Charter and Commissioner

The Residents' Charter is our promise to communicate as clearly as we possibly can with people who live along or near the HS2 route.

[www.gov.uk/government/publications/hs2-residents-charter](http://www.gov.uk/government/publications/hs2-residents-charter)

We also have an independent Residents' Commissioner whose job is to make sure we keep to the promises we make in the Charter and to keep it under constant review. Find reports at:

[www.gov.uk/government/collections/hs2-ltd-residents-commissioner](http://www.gov.uk/government/collections/hs2-ltd-residents-commissioner)

You can contact the Commissioner at: [residentscommissioner@hs2.org.uk](mailto:residentscommissioner@hs2.org.uk)

## Construction Commissioner

The Construction Commissioner's role is to mediate and monitor the way in which HS2 Ltd manages and responds to construction complaints. You can contact the Construction Commissioner by emailing: [complaints@hs2-cc.org.uk](mailto:complaints@hs2-cc.org.uk)

## Property and compensation

You can find out all about HS2 and properties along the line of route by visiting:

[www.gov.uk/government/collections/hs2-property](http://www.gov.uk/government/collections/hs2-property)

Find out if you're eligible for compensation at:

[www.gov.uk/claim-compensation-if-affected-by-hs2](http://www.gov.uk/claim-compensation-if-affected-by-hs2)

## Holding us to account

If you are unhappy for any reason you can make a complaint by contacting our HS2 Helpdesk team. For more details on our complaints process, please visit our website:

[www.hs2.org.uk/how-to-complain](http://www.hs2.org.uk/how-to-complain)

## Contact Us

Contact our HS2 Helpdesk team all day, every day of the year on:

 Freephone **08081 434 434**

 Minicom **08081 456 472**

 Email [hs2enquiries@hs2.org.uk](mailto:hs2enquiries@hs2.org.uk)

Write to:

**FREEPOST**

**HS2 Community Engagement**

Website [www.hs2.org.uk](http://www.hs2.org.uk)

To keep up to date with what is happening in your local area, visit:

[www.hs2inyourarea.co.uk](http://www.hs2inyourarea.co.uk)

Please contact us if you'd like a free copy of this document in large print, Braille, audio or easy read. You can also contact us for help and information in a different language.

HS2 Ltd is committed to protecting personal information. If you wish to know more about how we use your personal information please see our Privacy Notice

<https://www.gov.uk/government/publications/hi-gh-speed-two-ltd-privacy-notice>

Reference number: HS2-EW-BBV-Ph1-Ar-No-N2-Eco-1-02/03/2021

High Speed Two (HS2) Limited, registered in England and Wales.

Registered office: Two Snowhill, Snow Hill Queensway, Birmingham B4 6GA.

Company registration number: 06791686. VAT registration number: 888 8512 56.